

# BOREAL WOODLAND CARIBOU IN EYYOU ISTCHEE



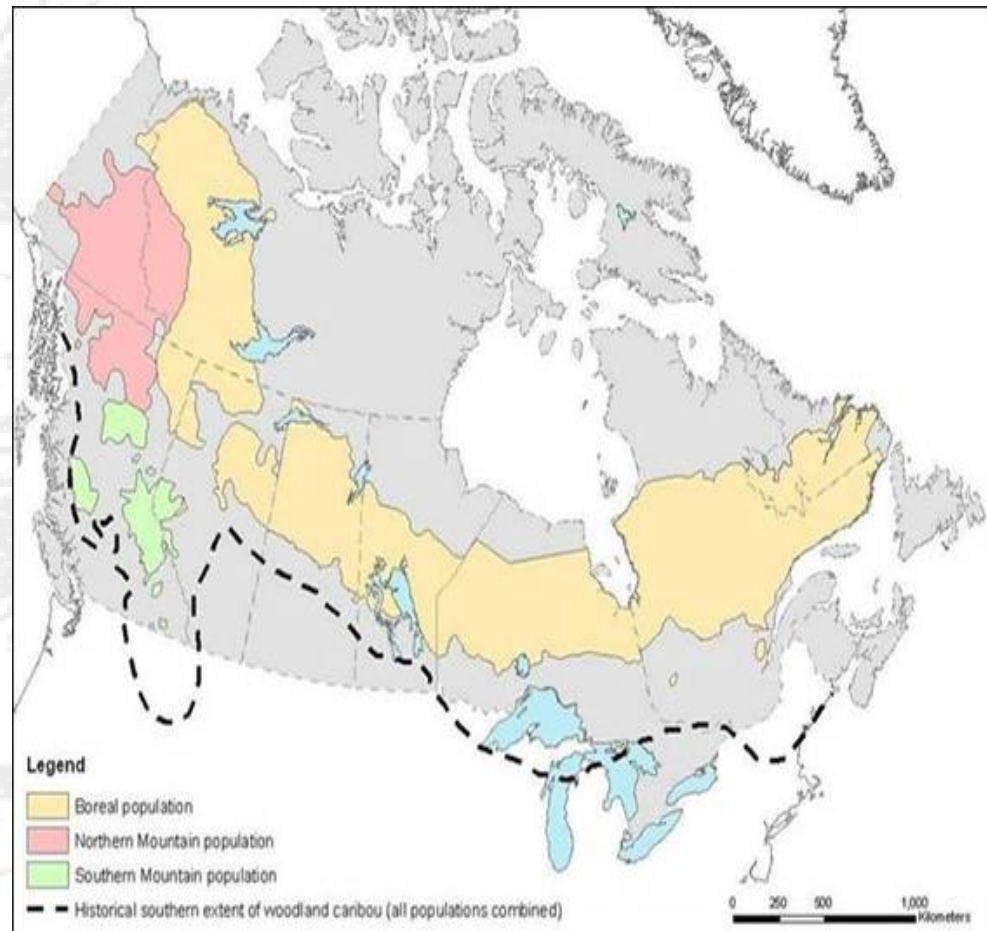
Presented to:  
GCC/CNG ANNUAL GENERAL ASSEMBLY -Chisasibi

Cree Nation Government/  
Grand Council of Crees of Eeyou Istchee

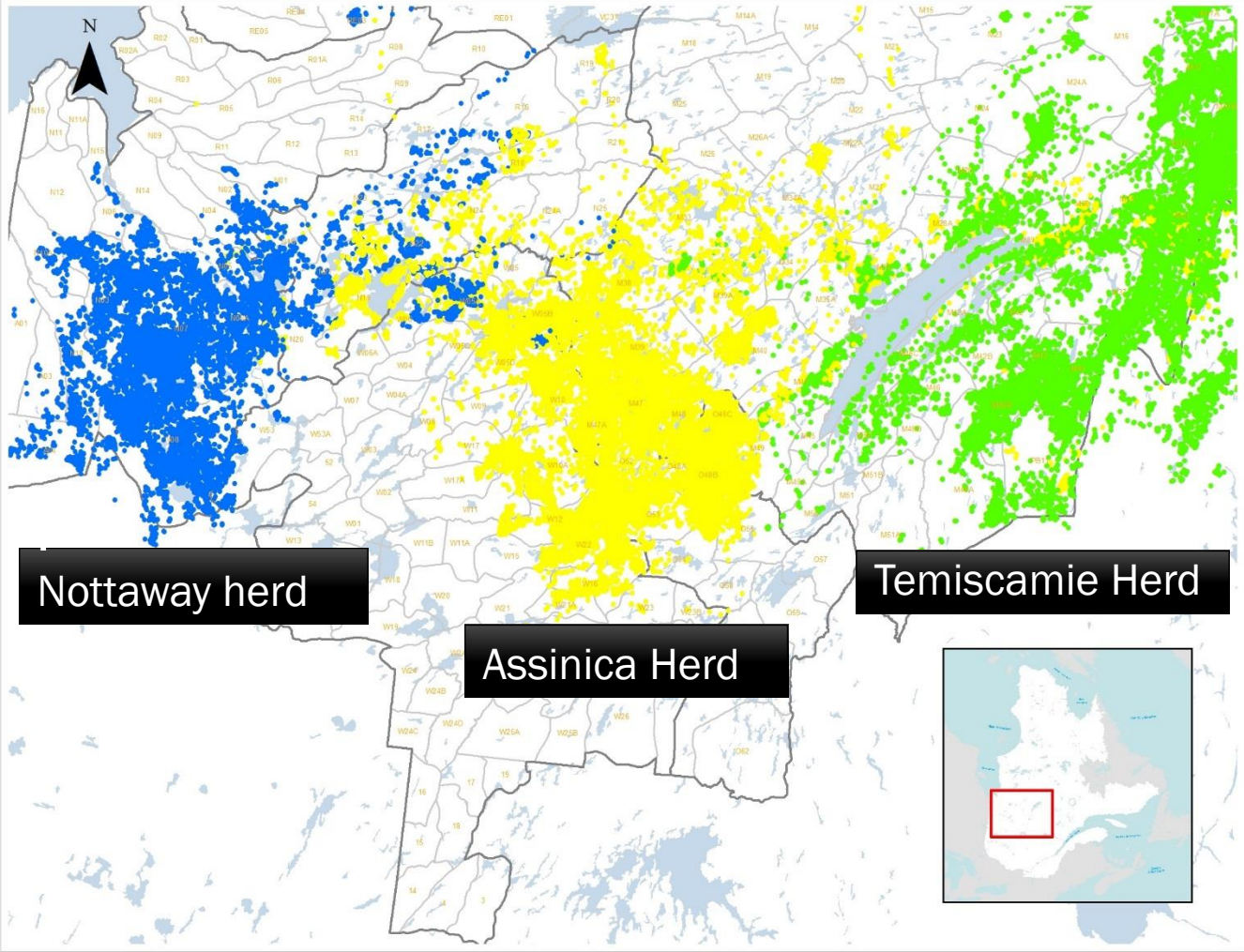
August 3rd, 2016

# BOREAL POPULATION

- Lives in boreal forest, short migration, disperse in isolation during calving period.
- Habitat fragmentation main cause for decline; range reduced northward
- Species At Risk;
  - *Vulnerable in Quebec since 2005 (LEMV)*
  - *Threatened in Canada since 2003 (SARA)*

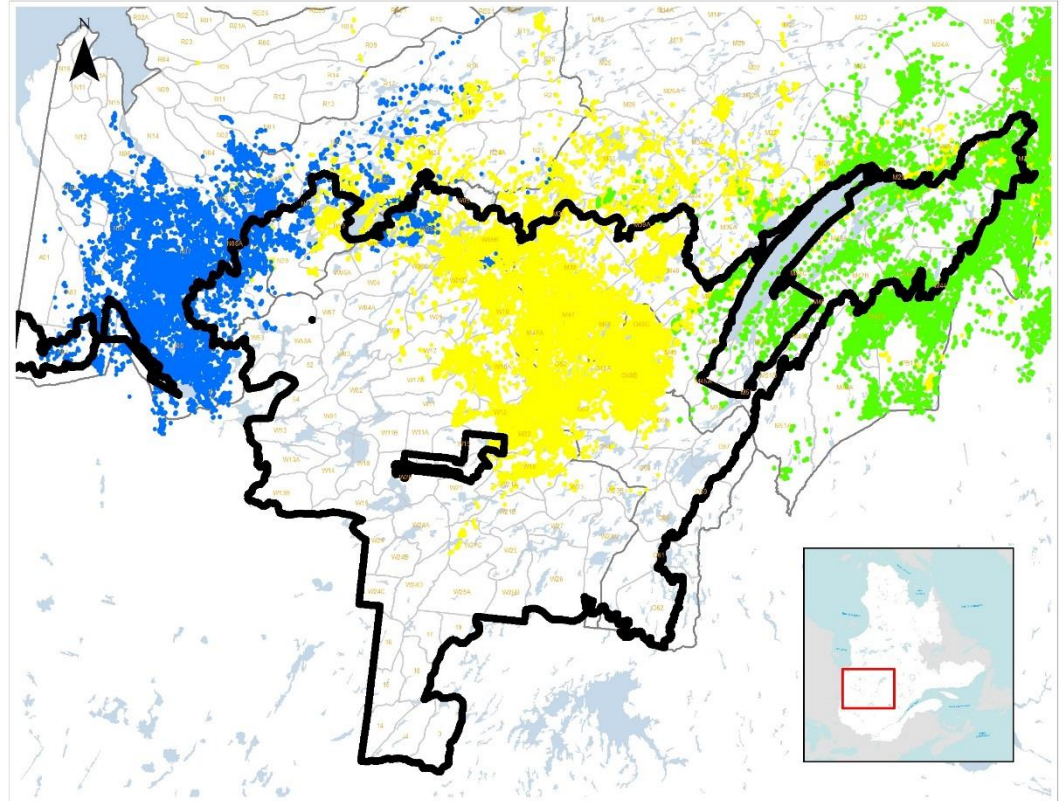


# BOREAL CARIBOU HERDS IN EYYOU ISTCHEE



# BOREAL CARIBOU HERDS IN EEYOU ISTCHEE

- Mostly located in and around the Paix des Braves – Adapted Forestry Regime.



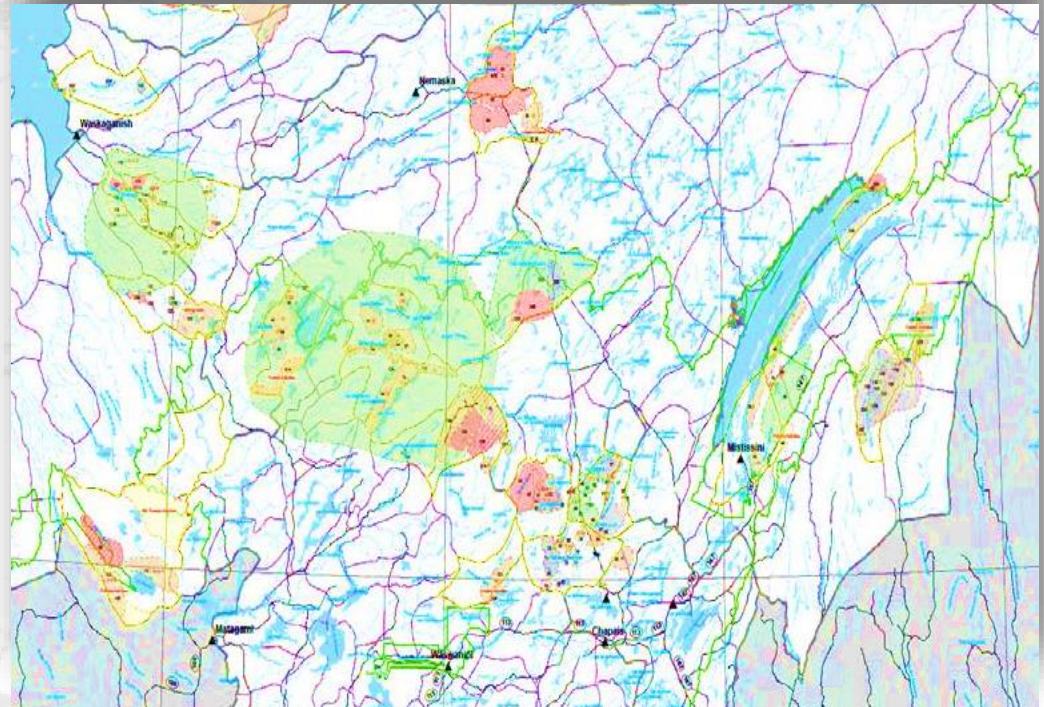
# A PORTRAIT OF CREE KNOWLEDGE (2010)



Study gathering knowledge on boreal caribou from 35 hunters and elders.

Some Conservation measures mentioned:

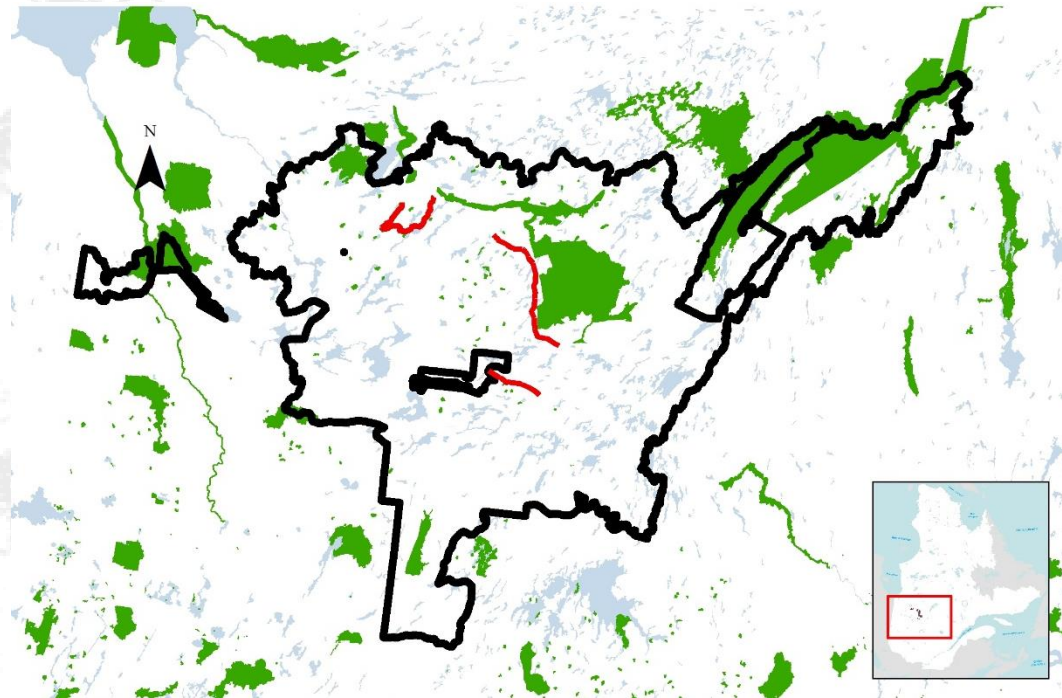
- Need to establish large conservation areas away from disturbances
- Several areas identified including the Broadback Area
- Building awareness
- Encourage traditional hunting values and practices
- Limit harvest to let the population rest and repopulate





# MAJOR FORESTRY ROADS PROPOSED

- In 2009 several large forestry roads proposed in Woodland Caribou habitat
- Cree objection lead to agreement that roads would be subject to EIA
- Process froze due to lack of a Caribou Management plan in the territory
- Cree-Quebec woodland Caribou Task Force created;
- 2012 Status report (*T.Rudolph & all.*) revealed that range disturbance are in excess of what is theoretically required in order to ensure population persistence.

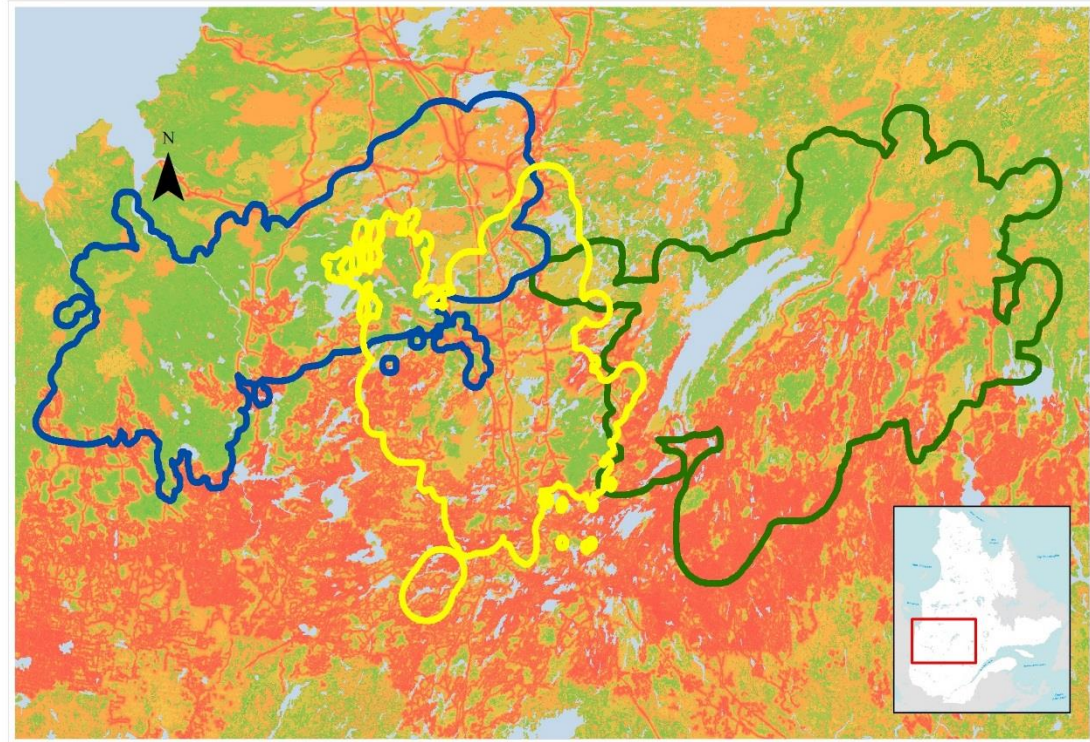


# STATUS OF BOREAL HERDS IN EYYOU ISTCHEE

Environment Canada Strategy recommends at least 65% of undisturbed habitat for viable population;

- **Nottaway** range 33.2% disturbed
- **Assinica** range 51.6% disturbed
- **Temiscamie** range 47% disturbed

All three herds are considered not self-sustaining (NSS) and current declines are predicted to worsen in the coming years as critical habitat is further eroded.

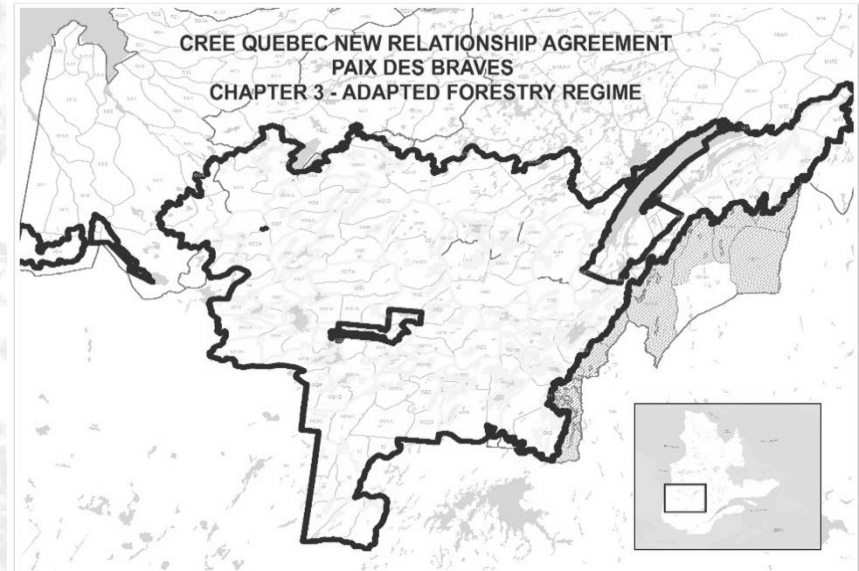


Rudolph, T. 2012 Report: Status of woodland caribou (*Rangifer tarandus caribou*) in the James Bay region of Northern Quebec



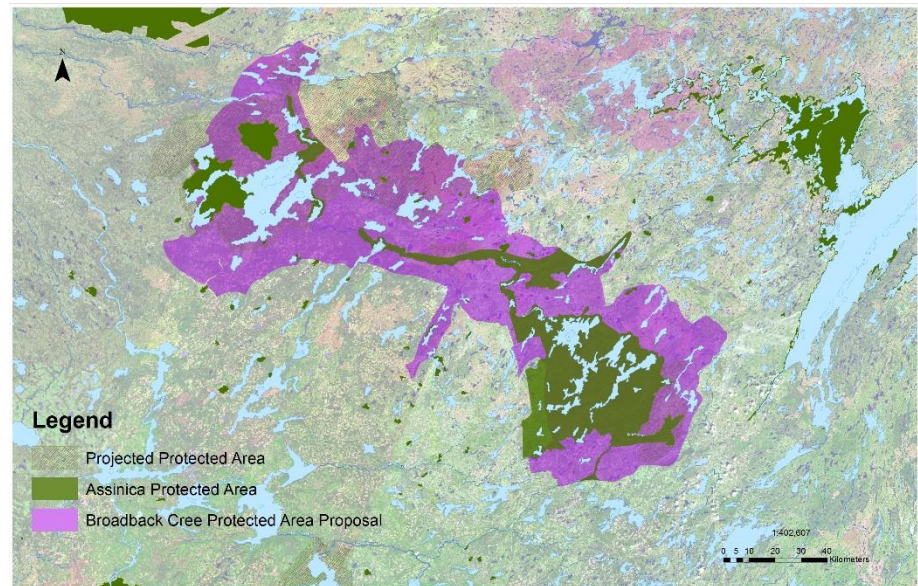
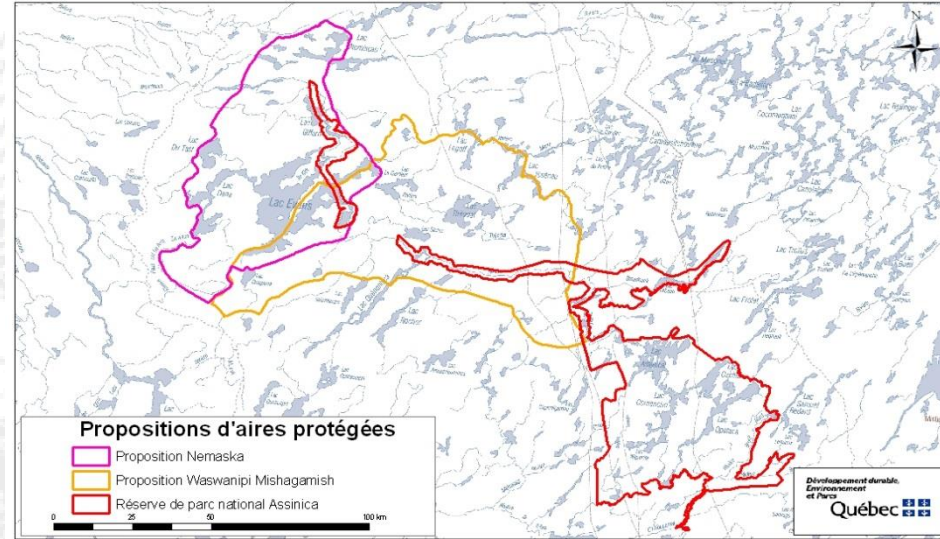
# ECOSYSTEMIC STRATEGY INCOMPATIBLE WITH CQNRA ADPATED FORESTRY REGIME

- Quebec proposed forest management strategies for Woodland Caribou; incompatible with Paix des Braves adapted forestry regime
  - *Mosaic management eg. (1,5km<sup>2</sup>) (50% cut and 50% residual forest ratio)*
  - *Quebec's Ecosystem-based approach: eg. ( up to 30 km<sup>2</sup>) (70% cut and 30% residual forest ratio)*
- Ecosystem-based Management Approach (adopted as part of new Quebec Forest Regime)
- Cree refuse to adopt Ecosystem-based approach as proposed by Quebec, but open to find suitable compromise between the Quebec Ecosystem strategy and Paix des Braves Forest Regime.



# BROADBACK PROTECTED AREA

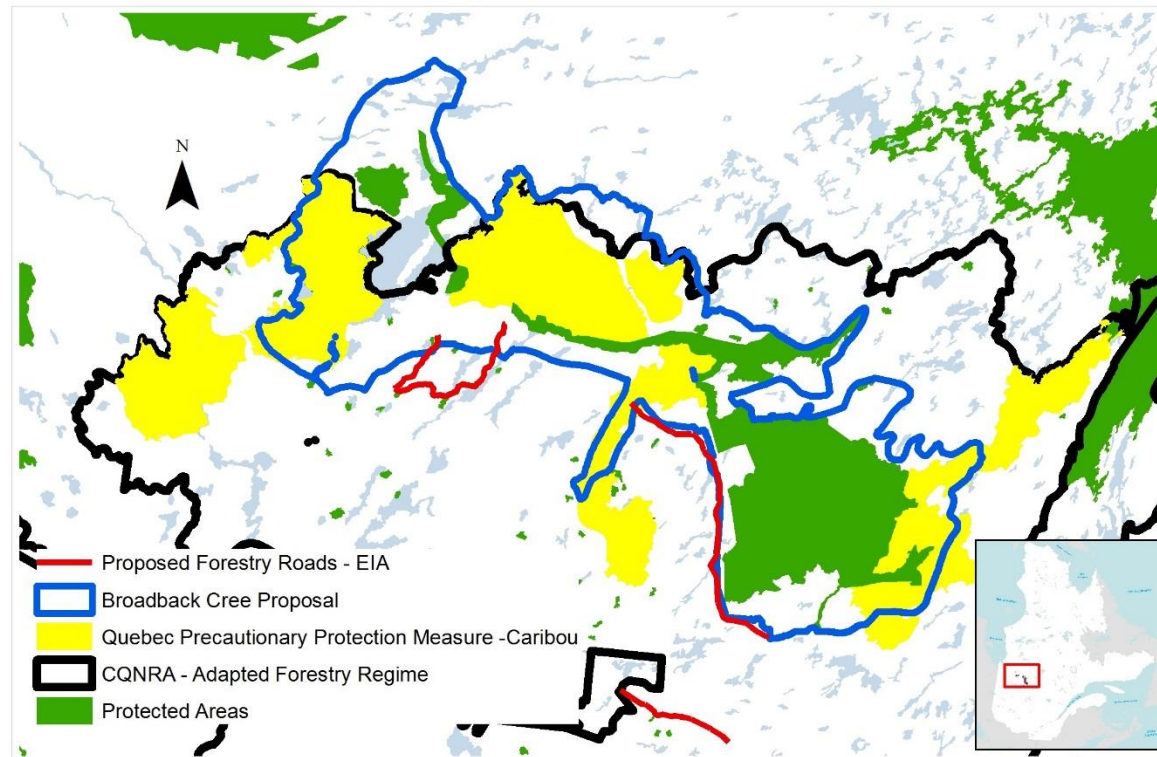
- Broadback Protected Area consolidated proposal by Waswanipi, Oujebougamou, Nemaska propose



<http://www.eeyouconservation.com/>

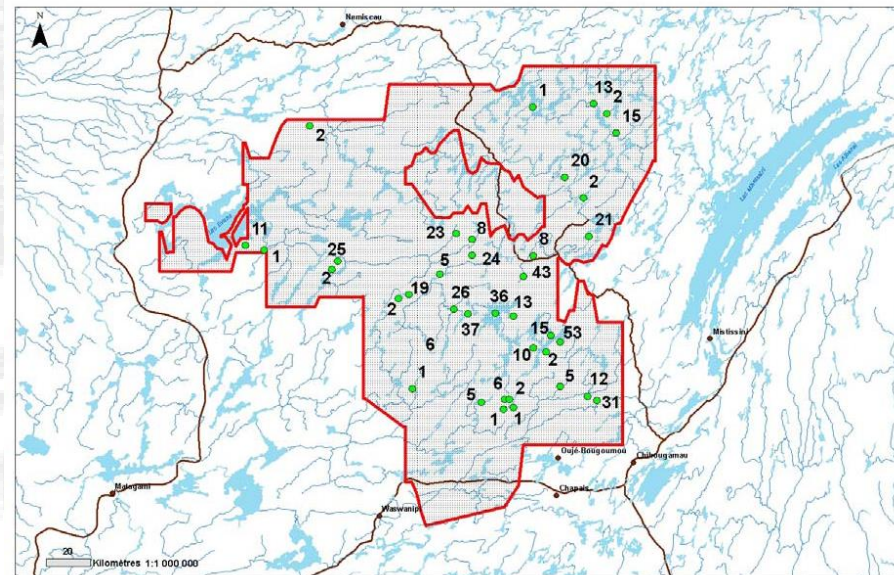
# QUEBEC PRECAUTIONARY MEASURE TEMPORARY PROTECTION

- 2013 proposed precautionary approach to respond to FSC requirements (several areas receive temporary protection)
- Also to unblock Road Assessment Process;
- Cree responded that Precautionary approach was insufficient and a recovery plan was needed.
- Roads encroaching into Cree proposed Broadback Protected Area
- Task Force becomes inactive – Progress on Caribou Management Strategy suspended



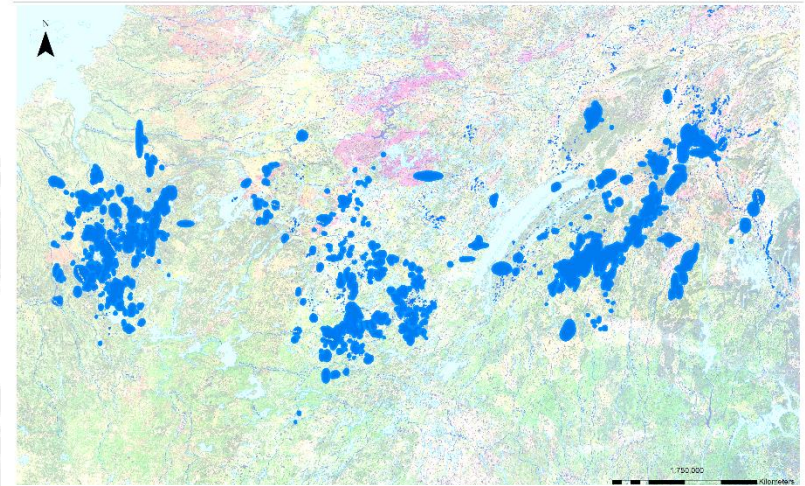
# ASSINICA HERD AERIAL CENSUS

- 2013 Cree - Quebec MFFP collaboration in planning and conducting aerial population census on the Assinica Herd
- Involvement of Cree Trappers Association and Cree Wildlife Technician Students
- Results; Estimate of 580 caribou in the Assinica herd.

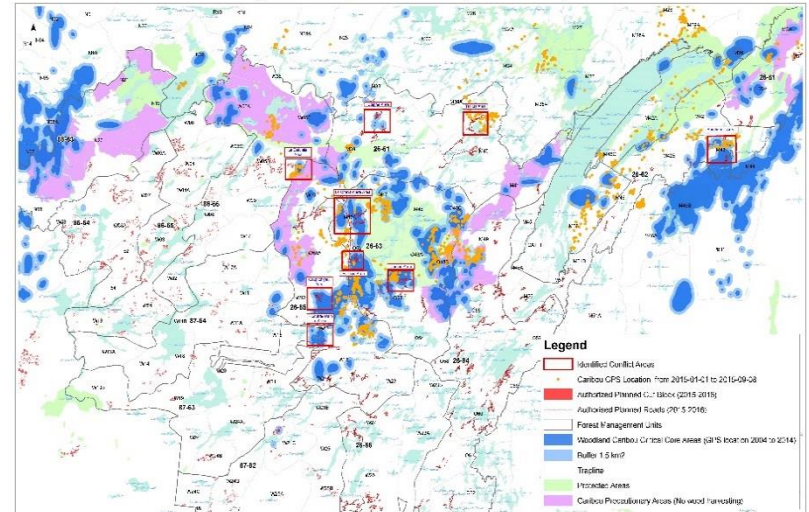


# CRITICAL CORE HABITAT

- CNG analysis on Qc proposed Precautionary area revealing critical core areas remain unprotected
- Cree request Quebec to halt all forestry activities in critical core areas

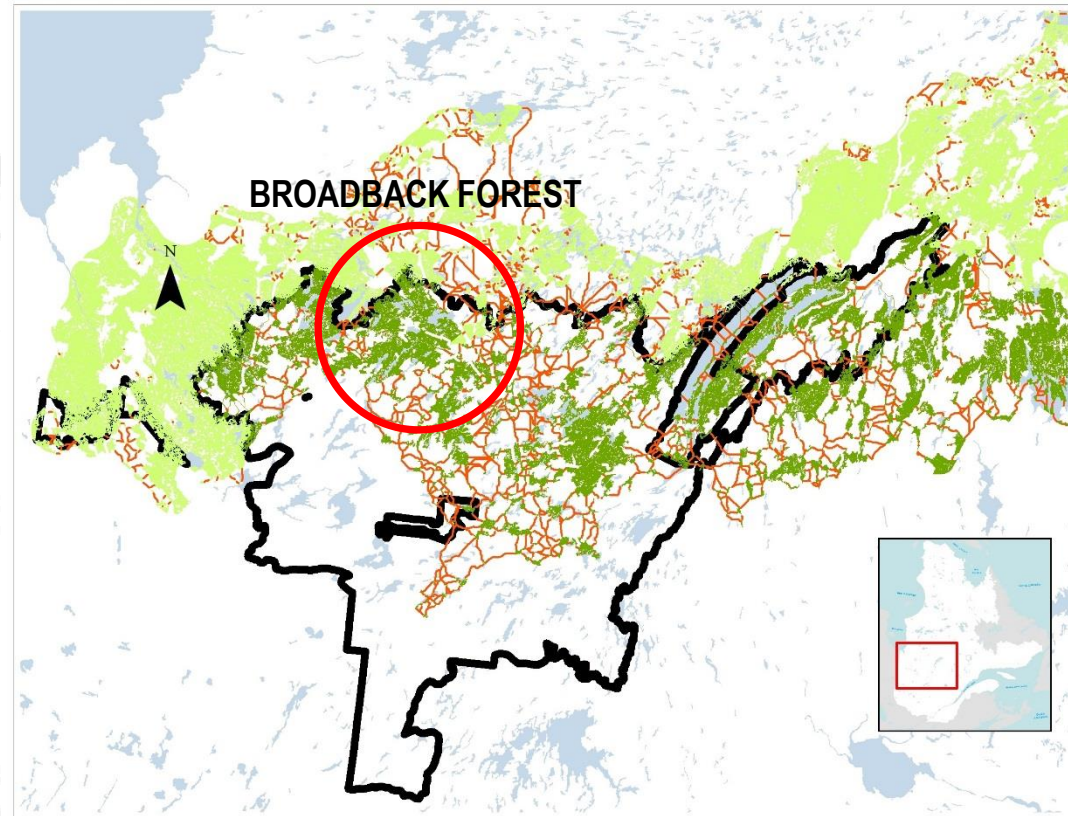


Authorized 2015-2016 Forestry Activities in Woodland Caribou (Boreal Population of Eeyou Istchee) Critical Core Habitat



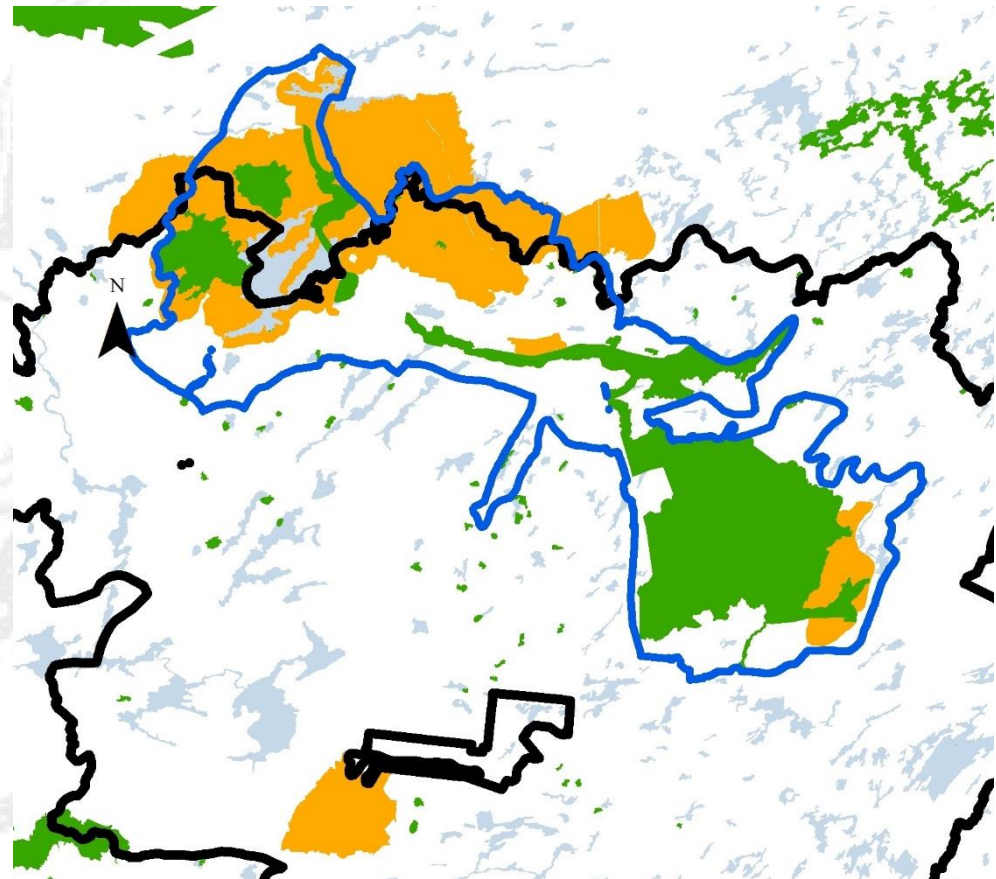
# MAINTAINING HABITAT CONNECTIVITY

- The maintenance of habitat connectivity is critical: Isolated populations are less resilient, more susceptible to disturbance or events (fires, diseases, etc.)
- CNG commends report to help feed into Caribou strategy; Analysis on connectivity habitat.
- Habitat connectivity of Assinica herd mostly affected
- The Broadback Forest is critical in maintaining functional connectivity



# BARIL-MOSES DISPUTE

- Dispute concerning forestry activities in compliance with Baril-Moses agreement.
- Leading to agreement to secure protection in certain areas of the Broadback Protection proposal
- Agreement also enable the resuming of the Environmental process of Proposed Forestry roads
- Opposition of forestry roads by Cree community of Waswanipi and NGO
- Proposed forestry roads authorised but with conditions, namely reducing length of roads.



# IN CLOSING

- Still no adapted forestry management plan for woodland caribou
- Recently, Quebec Governmental Action Plan released in April 2016; Changes to Northern boundaries, creating immense space for caribou, etc. (Action Plan vague: Cree request meeting)
- Need for a Conservation Strategy in Eeyou Istchee is pressing; CNG initiated discussions with forestry companies to explore potential solutions for caribou herd in the adapted forestry regime territory.



# MEEGWETCH!

